

13TH ANNUAL
CAMPBELL BAY MUSIC FESTIVAL
JUNE 23-25TH



2023

SKFAK & MAYNE ISLAND

2023 SPONSORS

With support from:

Mayne Island Chamber of Commerce
Mayne Island Trading Post
Mayne Island Food Bank
Farm Gate Store
Eden Buday



The Briary
Meadowmist Farm
Aqualink
Seal Beach Cottage
Morningstone B&B



The Mayne Island Chamber of Commerce is a proud supporter of CBMF:



Supported by the Province of British Columbia

We acknowledge the support of the CRD Arts & Culture Support Service

The Campbell Bay Music Festival takes place on the island called SKƧAK in the SENĆOFEN language of the WSÁNEĆ First Nations. We are forever grateful to live and play on the traditional territory of Coast Salish Nations. Territorial acknowledgments are just a small part of dismantling the colonial structures that continue to have far-reaching social, cultural, and spiritual impacts on indigenous people. We encourage visitors to engage in meaningful action through self-education, community building and wealth redistribution.

Huge thanks to all our Volunteers! We couldn't do this without you. Also to our wonderful Board of Directors: Jennifer Iredale, Richard De Armond, Robyn Jacob, Adam Bailey, Georgia Lloyd-Smith, Micki Stirling, and Chloe Campbell as well as Indigenous Advisor Rose Spahan. And to our incredible staff team who work tirelessly to make this festival happen: Adam Iredale-Gray, Meg Iredale-Gray, Ali Calladine, Sandra Henderson, Sarah Hamilton, Elise Boeur, Peter Mynett, Rylan Cook, Adrian Dolan, Jenny Ritter, Ryan Boeur, Ben Weber, Heather Doyle, Nic + Tiffany, Serena Jackson, Liam Keating, Dom Redsell, Cedric Torres, Suzanne Stirling, Isaac Vallee, Andrew Pye, and Inkspoon.

Special thanks this year to so many returning festival guests, local sponsors, and billet hosts. Your continued support year after year makes this whole thing possible!

Georgia Johnson
Executive Director
Campbell Bay Music Festival



Design: Leya Tess

Cover: Henny Verhoeven (Twiglings)

2023 ARTIST LINE UP



Balkan Shmalkan is East Vancouver's premier dance party orchestra. Their funky brass dance beats are rooted in the aural traditions of the Roma and Klezmer of Eastern Europe and blended with a mixture of pop, funk, and jazz. Think global music with local attitude. The group contains six to twelve professional musicians playing reed, brass, and drums of both eastern and western origin, which are best enjoyed where the audience is able to get up close and personal with the performance. Balkan Shmalkan is a spectacle unlike any other, they are a colourful, vibrant and celebrative group singing songs in 5 languages including Serbian, Romani, and Italian.

Bent Knee A band occupying sonic territory entirely of their own, Bent Knee is "equal parts ingenuity and deliciousness" (The Wall Street Journal), distilling myriad influences into a deeply moving art form that defies categorization. The Boston rock outfit "breaks new stylistic and experimental ground" (The Boston Globe), merging texture and style into music that's thrilling, addictive, and unapologetically original.

Corey Gulkin revels in the peculiar and makes it feel like home. Emerging from the world of folk music, the Montreal guitarist and songwriter has spent the last decade gradually carving a path towards experimentation and emotional transformation. Their upcoming album, Half Moon, takes a confident leap into the world of art-rock, locking eyes with the unknown. Confrontational, restless, and spirited, Gulkin rides the terror and thrill of refusing to back down, carried by the Thom Yorkian vibrato of their voice. From furious guitar solos to tender improvisation and cathartic moments, Gulkin's live set is an adventure.

Chiyokten is a Saanich Nation tribal member which is located on so called Vancouver Island BC Canada. As a Traditional Coast Salish Storyteller & flutist he brings us on a wonderful, profound and humorous journey to the world of Mermaids, Leprechauns, Grandmother cedar trees and marauding giant ogresses in traditional story, song and Native American flute music of his Coast Salish territory. We don't simply listen to the story... we are part of the story! We will travel to the ancient forests, meadows and waters of the Salish Sea and experience the eternal connective sounds of nature with masterful deliverance of Coast Salish Native American flute music and storytelling.



2023 ARTIST LINE UP



Ella Korth is a multi-instrumentalist and singer-songwriter. Growing up in a family of bluegrass musicians shaped her style and approach to music which fuses folk, bluegrass and old-time music together through a modern lens. Deeply influenced by musicians Bruce Molsky, Kitty Wells, and Darrel Scott as well as her own experiences as a painter, Ella brings a poetic, sincere and playful touch to her songwriting and arrangements.

FONTINE A hush sweeps across Turtle Island. Birds flock to perch on towering maples and the waving prairie grasses still. There is a name upon the tongue of every creature from the elk to the shrew. FONTINE. A gust of wind blows open the shutters of every home and young and old kneel in reverence to the dawn of a new era. FONTINE. Queen of the road, King of the song, FONTINE is here with a brand new EP.

Golden Shoals Folk/Americana duo Golden Shoals' songs are grounded in the vast landscape of American roots styles. Amy Alvey and Mark Kilianski weave fiddle, guitar, banjo, and two-part harmony singing with country, indie, and rock influences. The resulting sound is ancient, modern, and undeniably their own.

The Group of Seven are the senior members of the Pender Young Violins playing under the mentorship and direction of Denny Goertz. The Group of Seven are travelling to Finland this summer to perform at the legendary Kaustinen Folk Music Festival.

J'SINTEN Dr John Elliott is a respected Elder from the **WJOLELP** Tsartlip First Nation who played a pivotal role in the preservation and revitalization of the **SENCOFEN** language. He is a historian, mentor, language warrior, traditional knowledge keeper and a gifted teacher. For over 40 years he has taught language and culture courses at the **WSÁNEĆ** Tribal School, the University of Victoria and Camosun College, and is Chair of the First Peoples' Cultural Foundation. He co-founded FirstVoices.com, a web-based archive of over 70 Indigenous languages. U. Vic has honored him with a Community Leadership Award and an honorary doctorate. J'SINTEN has been honoring our Festival for many years through his generosity in sharing Opening words, ceremonial blessings and **WSÁNEĆ** stories about this place.



2023 ARTIST LINE UP



Madame B Musique est un groupe d'artistes et éducateurs bilingues en Colombie-Britannique. Madame B croit que les enfants ont besoin de la musique dans la vie quotidienne pour apprendre et s'amuser. Madame B Musique is a group of bilingual artists and educators in British Columbia. Madame B believes that children need music every day in order to learn and have fun. Get ready to TAP YOUR TOES to some original bilingual tunes FOR KIDS OF ALL AGES!

Meg Iredale's solo project is raw and gritty. Like the guitar she built on the back of her truck from salvaged yellow cedar, these songs came into being in a natural way. Her boldly honest lyrics, paired with a playing style and sound that moves like water, Iredale is writing from the gut, and you're going to feel it.

Peg Evans first fell in love with Appalachian Square Dancing at Clifftop Stringband Festival, in WV (2004), and started calling dances after attending "Dare to Be Square" in Helvetia, WV (2013). Peg's reputation as a fine, fun caller has garnered invitations to call at Blue Skies Festival (Clarendon, ON); Festival Sur le Canal (Montreal, QC); Queens University (Kingston, ON); Camp Wanapitei (Algonquin Park, ON); and numerous community events, school workshops, private parties and weddings.

Saltwater Hank Tsimshian folk artist Saltwater Hank has a natural comedic timing throughout his songwriting and performance, and the many hours spent on all of his chosen instruments are shown through his skillful delivery.

Skye Wallace With a skill in carving melodies and shreddable moments from rock foundations, Skye Wallace is also an expert at proving herself in every room, at every turn. The guitar-slinging Canadian road warrior has honed a visceral and honest sound, permeating equal parts Courtney Barnett, Patti Smith, and Neil Young's Marshall Stack era. A live show from Skye and her band is guaranteed to make you let loose and feel something.

Stonecrop Singers are Mayne Island's resident rock, pop and folk choir. All original arrangements, joyful harmonies, delight-bringers to all who hear them.

TEMOSEN Elliott (Chas) A dedicated WSÁNEĆ artist from and taught by his father the late Temosen Thut-Charles Elliott the techniques of Salish Art and design. Chas' welcoming poles will act as ambassadors and reminders of WSÁNEĆ territory.

Matt Parlby-Elliott WSÁNEĆ and assistant to Chas and dedicated to the carvings and visions of Coast Salish Arts.

Mendel Skulski is a storyteller with the podcast Future Ecologies: a show produced on (and often about) unceded Indigenous territories across the Salish Sea. Trained in Industrial Design, and steeped in reverence for nature's infinite, entangled beauty, Mendel opted to devote themselves to a less material form of production — that of sounds and ideas. They apply a musical ethos to narrative composition, using soundscape as an indispensable layer of communication.

Natasha (Tasha) Lavdovsky is a neurodivergent artist & amateur lichenologist, who grew up in traditional Tsawout First Nations unceded territory (in so-called BC). Since 2011, Tasha has been committed to deepening their understanding of anti-colonial perspectives & environmental stewardship, which greatly informs her/their ecologically oriented work in video, performance, photography, installation, textiles and sculpture. Look for Tasha's Lichen Sculptures!

Sarah Jim, lineage from Tseycum territory, her works are reflections of land-based relationships; ecosystems, human and non-human kin connections, and the power of restorative practices.

Myrna Crossley is an admired and talented weaver of Lyacson/Songhees descent whose works are in private collections and at the University of Victoria. Myrna sources natural dyes, hand spins wool and weaves on a traditional Salish loom to create gorgeous Salish blankets, shawls and ceremonial regalia.

Rose Spahan is an artist, teacher and independent curator in First Nations art who comes from WSÁNEĆ /Nłeʔkepmxc territories. Rose is the Festival Indigenous Curator and has been instrumental in curating and working for the inclusion of WSÁNEĆ art including the welcome poles, murals and workshops.

Tara Kannagara is a second-generation, Sri Lankan-Canadian, JUNO-nominated artist, force of nature, giving you music that is deeply personal, genre-bending and culture blending. All this, encompassed by wild trumpet melodies, searing guitar lines, lush synths, and piercing lyricism will make you turn your head and listen.

2023 ARTIST LINE UP



Thanya Iyer is an enigmatic songwriter who crafts sparkling experimental pop music. Her live band, with Pompey, Emilie Kahn, and Daniel Gélinas, wields acoustic and electronic instruments to flesh out these serene, spiritual compositions. Thanya and the band's arrangements empower listeners to embrace mindfulness, aesthetic beauty and the interconnectedness of all things.

Wesley Hardisty is a vibrant emerging Fiddle player, composer, and collaborator from the Northwest Territories. From Fort Simpson, Wesley is a member of the Dene Nation. He has performed nationally and internationally from Seattle to Iqaluit. He's played on folk festivals, fiddle music festivals, Indigenous-focused performances, including multiple tours of the NWT as a featured performer and supporting artist.

HELISET Drum Group are all descendants of the WSÁNEĆ people. They also come from the SENĆOŦEN speaking people of the four villages of WJOLEP, BOKEĆEN, WSÍKEM and STÁUTW. All of the youth involved in the drum group are all students in the LE,NONET immersion program located in WJOLEP. The lead singers and drummers are teachers in the immersion school and also work on language revitalization initiatives.

GISS Music Students (led by Mayne Islander Michelle Footz) students are excited to be performing at Campbell Bay Music Festival! The group performing this weekend consists of local strings group "19 Strings" (Kai Barrette, William Acken & Charlie Acken), as well as piper extraordinaire from Pender Island, Jack Martin, and up and coming country superstar, Salome Cullen.

Johnny MacRae When he's not whirling around his kitchen or babbling in broken Gaelic at the neighborhood cats, Johnny MacRae composes and performs spoken word about everything from umbrella-based class warfare, to loving family with dementia, to West Edmonton Mall.

Lucia Misch When not neglecting the house plants or taking long, late-night walks in hopes of seeing a skunk, Lucia Misch is a poet and performer who likes to write about big questions, small animals, and the dark absurdity of everyday life.

WORKSHOPS @ the Festival Vendor Area

SALISH WEAVING DEMONSTRATION

Saturday 10:30-1:00 PM (Tent 1)

Myrna Crossley, an admired and talented weaver of Lyacson/Songhees descent whose works are in private collections and at the University of Victoria. Myrna sources natural dyes, hand spins wool and weaves on a traditional Salish loom to create gorgeous Salish blankets, shawls and ceremonial regalia.



BANNOCK & SOAP BERRY ICE CREAM MAKING

Saturday 10:30 – 1:00 PM (Tent 2)

Lillian is Southern Tutchone from Kluane First Nation in the Yukon Territory. She lives on the TSAWOUT reserve with her husband Chief Harvey Underwood, of the Tsawout First Nation. She is passionate about educating people, and organizations about the history of Indigenous people. Her late grandma taught her how to make bannock at a young age and she enjoys teaching others how to make this delicious fried bread. She also likes to harvest soap berries and make Indian ice cream



CEDAR BARK ROSE MAKING

Saturday 1:30 - 4:00 PM (Tent 1)

Artisans, cousins and Elders SELILIYE Belinda Claxton of TSAWOUT and ŁOSINIYE Linda Elliott of WJOLĘŁP / Tsartlip. Raised in the traditions and culture of the WSÁNEĆ people, they will be offering to teach you how to make cedar bark roses. Spend time with these knowledgeable Elders to learn how the cedar bark is harvested and treated to make it pliable for weaving and learn about WSÁNEĆ culture, traditions, stories and language (SENĆOŦEN).



WORKSHOPS @ the Festival Vendor Area

MORNING MOVEMENT

9:30-10:15 AM Saturday & Sunday.

Join Dana and Chandler for guided morning movement in the field! Bring your own mat, or enjoy the feel of grass between your toes. Move your body in ways that feel good to start your day off right.

LICHEN IT!

1:00 PM Saturday (Tent 1)

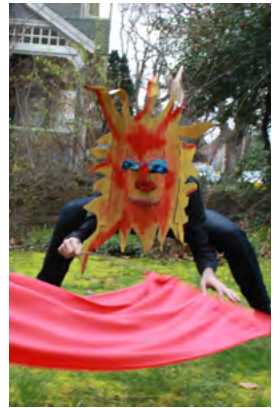
An introductory lichen walk w/ Natasha (Tasha) Lavdovsky. This workshop introduces participants to noticing, identifying, and understanding the amazing lichens that surround us. Build your knowledge around how to identify lichens, what a lichen is (or who they are), common species, what a lichen can tell us about the environment, lichen ecology, and discuss the ethics of collecting fallen lichens for various uses.



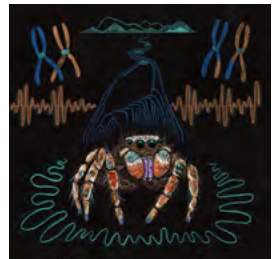
MASKING IT

1:15 – 4:15 PM Saturday (Tent 2)

Mask & character building workshop led by Mark Zupan & Chandler McMurray-Ives. Part 1: guided exercises on developing curiosity about how we mask everyday, who and what we are embodying in this very moment, and how masks can be used in creative character development. Explore the world within and around us and tap into our creative selves, collaboratively create a masked character. Part 2: explore character building through sound, stories, quirks, ways of connecting and attitude to help move our character from simple shape and form into life!



SPIDERS SONG is a data sonification: a way of listening to an evolutionary tree as a piece of music — to hear the pattern of correlation and convergence. Find the workshop booth in the vendor area, put the provided headphones on, and experience it for yourself! w/ Mendel Skulski from Future Ecologies (+ digital drawing collab with Leya Tess). Booth running for the duration of the festival. Drop by 12:30-1:30 or 5:30-6:30 pm to speak with Mendel about the project!



ART & INSTALLATIONS

UNTITLED ȚETĂCES'

Friday June 23: 1- 3:30 pm

Saturday June 24: 10- 4 pm

@ Mayne Island Agricultural Hall

Calling into question 'title' to the islands, WSÁNEĆ artist TEMOSEN Chas Elliott (WJŌŁEŁP) and U.Vic doctoral candidate Kim Shortreed collaborated to create this interactive art installation that allows us to explore, learn and react to the Indigenous names of the Islands and, at another level, asks us whose land is this?



SKȚAK MURAL DESIGNS

is a large-scale triptych created by artist Sarah Jim (TSEYCU) whose work is inspired by the beauty of the lands and waters stewarded by the WSÁNEĆ people since time immemorial. "This exhibition highlights the talents of a new generation of Indigenous artists who are at the forefront of preserving and revitalizing their cultural traditions through art."

-Curator Rose Spahan



CEREMONIAL POLE UNVEILING

Friday June 23, 4-5 pm

@ Agricultural Hall Grounds

Come witness the ceremonial unveiling of WSÁNEĆ welcome poles carved by WJŌŁEŁP / Tsaltlip artists Chas Elliott and Matt Parlby-Elliott. Hosted by the Festival Society and the Mayne Island Agricultural Society.



FESTIVAL INFO



MERCH

Visit the Merch tent at the gate to take home a record from your favourite festival artists, and find nifty shirts, stickers, water bottles, and memorabilia from the festival! Buying albums from artists at a show or festival supports them directly, and you can probably track them down for an autograph... Our 2023 CBMF shirts were designed by [Henny Verhoeven \(Twiglings\)](#), and silkscreened by Inkspoon Kinetic Livery on Salt Spring Island.

BEER

We are licensed! We're selling beer from Mayne Island Brewing (Mayne) and Hoyne (Victoria). We've also have cider from Twin Island (Pender) and wine from Blue Grouse (Duncan), both delicious, both made on Vancouver Island. This means a couple of things for us: one, you get to drink awesome craft-brewed stuff, and two, absolutely no outside alcohol in the licensed area. Bar closes at 10pm. Be prepared to show your ID.

FOOD & COFFEE

Check out the Vendor area for a delicious array of food and drinks! Offsite, visit Farm Gate Store on Fernhill Road and the Mayne Island Trading Post in Miners Bay for local groceries! On Saturday Morning, check out the Farmers Market which runs from 10-1 at the 'Market Stage'.

WATER

Water is a limited resource on the Gulf Islands. Only drink from marked potable water sources & conserve water at the wash / drinking stations located in both fields.

MAYNE ISLAND FARMERS MARKET

Saturday 10-1pm - Agricultural Hall Grounds (Miners Bay)

Music • Local Produce • Baking • Lunch • Snacks • Art • Crafts.

Please be conscious that you are in a neighborhood & do not litter. Support the local vendors/shops! Directions: From the festival gate, take a right on Campbell Bay Road (back towards the ferry), then another right on Fernhill Road. Approximately a 25 minute walk from the CBMF festival site.

FIRST AID & SAFETY

First Aid and Lost & Found are situated at the main gate.

This is a working farm. We've done our best to clear the upper field of rocks & glass (from an old greenhouse) but make sure to wear sturdy footwear on the festival site. There is absolutely no access to the new agricultural reservoir in the field. It's also full of goose poop. You don't want to go in there. Keep kids away!

SMOKING

Smoking in designated areas only please, no smoking in the crowd. We have a couple of smoking spots marked out, with lots of ashtrays / butt cans. Proper disposal of butts is really important, as it's very very dry in the field. Which brings us to...

FIRES

No fires. None. There is an island-wide ban on outdoor burning of any variety & a high risk of forest fires.

DOGS

All dogs must be under control at all times. Please pick up after your dog and be considerate of other attendees!

LATE NIGHT

Please remember that this is a family farm. We live here, and we have neighbours! Our community has been amazingly supportive of this event, and we want to respect them in return. Whether you're in the camping area, or moored on a boat in the bay, please put the instruments away by 1am. No percussion instruments please; the sound carries over the bay much louder than anything else.

LATE NIGHT SHUTTLE

No drinking and driving! Use the shuttles to get home safe.

The community bus will offer a late-night shuttle to all points on Mayne Island. Shuttles leave from the marked area near the main gate and take you anywhere you need to go. They are not on a schedule, so there may be a wait - go to the pickup point early, and the bus will come around! The last shuttle: 1am.

AFTER THE FESTIVAL

Please clean up your campsite carefully & take all of your garbage with you. We need your help to keep this farmland in good condition! Please pack up your campsite by noon on Sunday. You are welcome to stash your gear in an out of way spot while you enjoy the Sunday Programming. This gives our amazing volunteer site crew time to return the farm to working order before catching their boats!

BUS SHUTTLE TO FERRY

The Mayne Island Community Bus is offering a shuttle service from the festival to the Village Bay Ferry Terminal. Shuttles leave from the parking area just opposite the main gate. There is a shuttle meeting point sign posted. Shuttles leaving the festival will run to catch most sailings to Vancouver and Victoria on Sunday. Plan on being there a minimum of 45 minutes before your sailing, earlier is better! It is a short drive to the ferry, but there are many folks trying to make it to each boat. If you need a shuttle for the 7:30am or 7:45 ferry on Sunday morning, sign up at the gate before 8pm on Saturday.



FERRY SCHEDULE SUNDAY JUNE 25

We HIGHLY recommend that you make reservations if you are travelling to Tsawwassen

1-888-223-3779 or www.bcferries.com/res/

Village Bay to Tsawwassen	Village Bay to Swartz Bay	Folks heading to Vancouver can also choose to travel thru fare from Village Bay to Tsawwassen via Swartz Bay. Check arrival time at Swartz Bay & leave enough time to transfer vessels.
7:45 am	7:30 am	
4:20 pm	11:15 am	
7:55 pm	3:40 pm	
	4:05 pm	
	7:45 pm	
	8:25 pm	



Thank you for supporting live music, art, and community!

2023 SCHEDULE

FRIDAY

JUNE 23 - FOREST STAGE



19:00	J'SINTEN with HELI,SET Drum Group
20:00	Golden Shoals
21:00	Thanya Iyer
22:00	Fontine
23:00	Skye Wallace

SATURDAY

JUNE 24 - MARKET STAGE*



10:00	Intro: J'SINTEN
10:10	Stonecrop Singers
11:00	The Group of Seven
12:00	GISS Music Students
13:00	Balkan Shmalkan
14:00	Square Dance

*Market stage is located off-site at the Agricultural Hall Grounds, in Miners Bay

SATURDAY

JUNE 24 - FOREST STAGE



14:30	Free Play Kids Time
15:00	Chiyokten
15:50	Madame B Musique
17:00	Wesley Hardisty
18:00	Ella Korth
19:00	Meg Iredale
20:00	Corey Gulkin
21:00	Saltwater Hank
22:00	Tara Kannangara
23:00	Bent Knee

SUNDAY

JUNE 25 - FOREST STAGE



10:00	Sing Along
11:30	Fiddle Jam: Ella Korth, Golden Shoals, Saltwater Hank, Wesley Hardisty & More!
12:45	Collab Session: Fontine & Tara Kannagara
14:00	Collab Session: Bent Knee, Corey Gulkin & Thanya Iyer